



RIWC 2016

T A I P E I

2016 19th Retina International World Congress

Date:
July 06-10
.....
2016

• PROGRAM BOOK

TAIPEI
TAIWAN

Venue: Taipei International Convention Center



Contents

Preliminaries

Welcome Messages

Committees

Acknowledgements

Invitees

General

Program at a Glance

Registration

Congress Information

Exhibition

Social Program

Venue Map

Floor Plan

Information on Taiwan

Scientific Programs

Daily Program

Wednesday, July 06, 2016

Thursday, July 07, 2016

Friday, July 08, 2016

Saturday, July 09, 2016

Sunday, July 10, 2016

Welcome Message

Dear Colleagues and Friends,

On behalf of Retinitis Pigmentosa Taiwan and Retina Hong Kong, we are pleased to announce that the 19th Retina International World Congress will be held at Taipei International Convention Center (TICC), Taiwan in July 6 - 10, 2016. With the great support of Retina Hong Kong, Retinitis Pigmentosa Taiwan have the honor to jointly hold the first Retina International World Congress in Great China region.

Retina International (RI) is an international non-profitable organization, is a voluntary charitable umbrella association of 33 national societies each of which is created and run by people with Retinitis Pigmentosa (RP), Usher Syndrome, Macular Degeneration and allied retinal dystrophies, their families and friends. They have been putting significant efforts for treatment on retinopathy and the research of preventive science.

The five-day Retina International World Congress gathers all the leaders and patients from all around the world to discuss the researching development on retinopathy. With a diversity of substantive programs, activities, forums, work-shops and latest releases. These would serve to build up mutual support and networking platforms for affected persons and to strengthen relationships among all parties concerned, including affected persons and their family members and friends, as well as researchers and professionals, such as scientists, ophthalmologists and medical experts from different places in and beyond the Greater China region.

Importantly, we have also invited the most outstanding experts in the retinal field to share their experience. They will highlight the advantages of each approach, and provide inspiration for all of us. Together, there will be opportunities for in-depth and fruitful debates on the different approaches to treatment on retinopathy.

On a lighter note, Taipei is also a vibrant and beautiful place to visit. Taiwan is famous for our friendly people, exquisite culture, and wonderful cuisine. We warmly welcome every one of you and hope you enjoy your stay in Taiwan.

Sincerely yours,

Chao-Ming, Lin

Chairman of Retinitis Pigmentosa Taiwan

Kin-Ping, Tsang

Chairman of Retina Hong Kong

Committees

Co-Chairs:

Ms. Christina Fasser	(Retina International)
Mr. Chao-Ming Lin	(Retinitis Pigmentosa Taiwan)
Mr. Kin-Ping Tsang	(Retina Hong Kong)

Members:

Dr. Shi-Huang Lee	(Taichung Veterans General Hospital)
Dr. Feng-Li Li	(Taipei Veterans General Hospital)
Dr. Keng-Hung Lin	(Veterans General Hospital)
Dr. Wen-Chuan Wu	(Kaohsiung Medical University Chung-Ho Memorial Hospital)
Prof. Kuen-Yuh Wu	(National Taiwan University)
Dr. Ying-Cheng Shen	(Taichung Veterans General Hospital)
Dr. Shih-Jen Chen	(Taipei Veterans General Hospital)
Dr. Shu-Chuan Hsu	(Kaohsiung Veterans General Hospital)
Dr. Chung-May Yang	(National Taiwan University Hospital)
Dr. Jorn-Hon Liu	(Cheng Hsin General Hospital)

Scientific Committee:

General Co-Chair:

Dr. Jorn-Hon Liu	(Cheng Hsin General Hospital)
Prof. Stephen Lam	(The Chinese University of Hong Kong)

Members:

Dr. Shi-Huang Lee	(Taichung Veterans General Hospital)
Dr. Keng-Hung Lin	(Taichung Veterans General Hospital)
Prof. Chi-Ho To	(Hong Kong Polytechnic University)
Prof. Shea-Ping Yip	(Hong Kong Polytechnic University)

Acknowledgements

The Organizing Committee would like to extend its great gratitude to the following sponsors and organizations who generously contribute and support to the success of the 19th Retina International World Congress.

Corporation

SILVER SPONSOR

Bayer



Bayer is a Life Science company with a more than 150-year history and core competencies in the areas of health care and agriculture. With our innovative products, we are contributing to finding solutions to some of the major challenges of our time. The growing and increasingly aging world population requires improved medical care and an adequate supply of food. Bayer is improving people's quality of life by preventing, alleviating and treating diseases. And we are helping to provide a reliable supply of high-quality food, feed and plant-based raw materials.

Bayer Taiwan website : www.bayer.com.tw

Novartis



Novartis is a global healthcare company based in Basel, Switzerland, with roots dating back more than 150 years. We provide healthcare solutions that address the evolving needs of patients and societies worldwide. Novartis products are available in more than 180 countries and they reached nearly 1 billion people globally in 2015. About 123 000 people of 144 nationalities work at Novartis around the world.

Please refer to www.novartis.com.tw for more information.

Retina Implant AG



RETINA IMPLANT AG IS THE LEADING DEVELOPER OF SUBRETINAL IMPLANTS FOR PATIENTS BLIND DUE TO RETINITIS PIGMENTOSA. THE COMPANY IS FUNDED BY PRIVATE INVESTORS WITH THE GOAL OF DEVELOPING A FULLY FUNCTIONING ELECTRONIC SUBRETINAL IMPLANT TO RESTORE USEFUL VISION TO THE BLIND. IN 2005, RETINA IMPLANT BEGAN IMPLANTING ITS DEVICE IN HUMAN PATIENTS, AND STARTED A SECOND CLINICAL TRIAL IN 2010. IN JULY 2013, THE RETINA IMPLANT ALPHA DEVICE WAS

CE-APPROVED AND IS THE FIRST SUBRETINAL IMPLANT ON THE MARKET. IT IS NOW AVAILABLE AND REIMBURSED IN 7 CLINICS IN GERMANY, OTHER COUNTRIES WILL FOLLOW. TO LEARN MORE, VISIT: [HTTP://WWW.RETINA-IMPLANT.DE/](http://www.retina-implant.de/)

Okuvision



Okuvision offers the "OkuStim®" system, which is one of the first outpatient treatments for retinitis pigmentosa (RP) whose safety and efficacy has been shown in clinical studies. The Okuvision therapy can verifiably slow down the progression of the disease and thereby preserve vision for longer by guiding weak electrical pulses to the retina. OkuStim® is a CE approved medical product and can only be used with a medical prescription. The system is set by the doctor to meet the individual characteristics of each patient. Patients can treat themselves at home or at eye-centers with regular eye exams at the hospital. To learn more please visit: www.okuvision.de

OTHER SPONSORS

Second Sight



Second Sight Medical Products, Inc. is the developer and manufacturer of the Argus II® Retinal Prosthesis System - the first and only CE-Marked and FDA approved long-term therapy for people living with advanced Retinitis Pigmentosa.

Argus II is designed to restore some level of vision to people who are profoundly blind and provide them with increases in orientation and mobility skills, object localization and recognition, and people localization. In doing so, it is intended to increase their independence and quality of life by restoring their ability to see objects and motion.

At Second Sight, our mission is simple: To develop, manufacture, and market implantable visual prosthetics to enable blind individuals to achieve greater independence.

With continued investment in research and development, it is believed that our technology will serve as a platform to treat nearly all forms of blindness with the potential to treat over 8 million people worldwide.

Government & Association



Bureau of Foreign Trade



Department of Health, Taipei City Government



Department of Information and Tourism,
Taipei City Government



Ministry of Foreign Affairs, R.O.C. (Taiwan)



Health Promotion Administration,
Ministry of Health and Welfare

(The expenses of this Program is partly sponsored by the Health and Welfare Surcharge on tobacco products.)



Ministry of Science and Technology

Ministry of Science and Technology

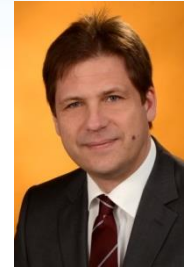
Invitees



Paul S. BERNSTEIN, USA
Moran Eye Center, University of Utah



Guido BLAESS, Germany
Okuvision GmbH



Peter BÖHM, Germany
ARA-Tec GmbH



Gerald CHADER, USA
University of Southern California



Caroline CHEE, Singapore
National University Health Hospital



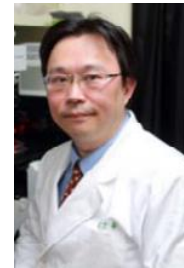
San-Ni CHEN, Taiwan
Changhua Christian Hospital



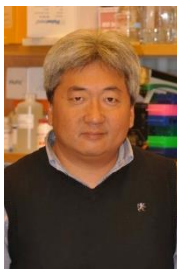
Shih-Jen CHEN, Taiwan
Taipei Veterans General Hospital



Wen-Fu CHEN, Taiwan
Agricultural Research Institute, Council of Agriculture, Executive Yuan



Shih-Hwa CHIOU, Taiwan
Taipei Veterans General Hospital



Daniel C. CHUNG, USA
Spark Therapeutics Inc.



Katarina CREESE, Australia
Centre for Eye Research Australia; The Royal Victorian eye and Ear Hospital



Kentarou DOI, Japan
Medtronic Japan Co., Ltd.



Takashi FUJIKADO, Japan
*Osaka University Graduate School
of Medicine*



Frances FULTON, USA



See-Hung HA, Hong Kong S.A.R.
Retina Hong Kong



Elise HEON, Canada
The Hospital for Sick Children



Yih-Shiou HUANG, Taiwan
Chang Gung Memorial Hospital



Takeshi IWATA, Japan
*National Institute of Sensory
Organs, National Hospital
Organization Tokyo Medical Center*



Zibin JIN, P.R. China
*The Eye Hospital of Wenzhou
Medical University*



Gregg T. KOKAME, USA
*University of Hawaii School of
Medicine*



Stephen LAM, Hong Kong S.A.R.
*The Chinese University of Hong
Kong*



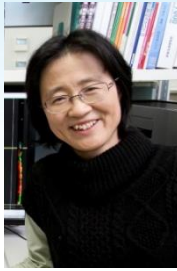
Keng-Hung LIN, Taiwan
*Taichung Veterans General
Hospital*



Ying LIN, P.R. China
Library of Guangzhou University



Ming LIU, P.R. China
East China Normal University



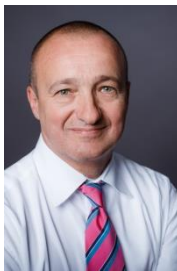
Michiko MANDAI, Japan
*RIKEN, Center for Developmental
Biology*



Morten C. MOE, Norway
*Department of Ophthalmology, Oslo
University Hospital and University
of Oslo, Norway*



Serge PICAUD, France
Institut de la vision



Helmut G. SACHS, Germany
*Eye Clinic, Klinikum
Dresden-Friedrichstadt, University
teaching hospital of the technical
university Dresden.*



Juliana M. Ferraz SALUM, Brazil
*UNIFESP Federal University of São
Paulo*



Suet Ming TAM, Hong Kong S.A.R.
Retina Hong Kong



Francesco TESTA, Italy
Second University of Naples



Hiroshi TOMITA, Japan
*Iwate University/ Graduate Course
in Biological Sciences*



Walter WROBEL, Germany
Retina Implant AG, Germany



Shuichi YAMAMOTO, Japan
Chiba University Hospital



Chang-Hao YANG, Taiwan
*National Taiwan University
Hospital*



Richard YANG, Hong Kong S.A.R.
Reflection Biotechnologies



Patricia ZILLIOX, USA
*Foundation Fighting Blindness
Clinical Research Institute*



Eberhart ZRENNER, Germany
University of Tuebingen

Program at a Glance

Program		The 19th Retina International World Congress			
Continuous Education Program		July 09, 2016 (Sat.)		July 10, 2016 (Sun.)	
Date	Program	Date			
Time/Room					
08:00-08:30		101AB, 1F	101C, 1F	101D, 1F	103, 1F
08:30-08:45	Opening Ceremony				201, 2F
08:45-09:15					
09:15-09:45					
09:45-10:15	Communication and Advocacy				
10:15-10:45					
10:45-11:15	Coffee Break				
11:15-11:45					
11:45-12:30	Communication and Advocacy				Plenary 2 WITH Simultaneous Interpretation
12:30-13:30	Lunch Break				
13:30-14:30					
14:30-15:00	Research and Drug Development				
15:00-15:30	Coffee Break				
15:30-16:00					
16:00-16:30	Research and Drug Development				
16:30-17:00					
17:00-17:25					
17:25-17:30	Discussion & Concluding Remarks				

Registration

Registration Hours

The registration desk will be located on the 1st Floor, Lobby of Taipei International Convention Center (TICC) from Friday, July 08 through Sunday, July 10, 2016 during the following hours:

Services Hours

08:00-17:30 Friday, July 08~ Saturday, July 09, 2016

08:00-12:00 Sunday, July 10, 2016

Registration Fees

(The congress uses a fixed exchange rate US\$1=NTD33)

On-site (July 8-10, 2016)

The 19th Retina International World Congress

General Participants:	US\$200=NT\$6,600
Patients:	US\$200=NT\$6,600
Accompanying person to Patient: (Only one per patient)	US\$150=NT\$4,950
Students:	US\$150=NT\$4,950

Additional Purchases

(For the delegates who have registered the World Congress ONLY)

Speaker's Dinner:	US\$60=NT\$1,650
Gala Dinner:	US\$80=NT\$2,640

**Only CASH (NT\$) and CREDIT CARD (VISA /Master/JCB) will be accepted for payment.*

Badge Information

The badge will be provided to each registered delegates together with all the necessary coupons onsite upon checking in.

All participants are required to wear the badge all the time during the congress period for recognition.

STATUS	ENTITLEMENT
DELEGATE	<ul style="list-style-type: none"> ✧ Admission to all Scientific Sessions and Exhibition. ✧ Admission to Congress Social Programs (Welcome Reception / Opening Ceremony) ✧ Congress Kit (Congress Bag, Badge, USB with E-Program Included) ✧ Congress Lunch on July 09, 2016. ✧ Refreshment during the Congress Period
ACCOMPANYING PERSON	<ul style="list-style-type: none"> ✧ Admission to all Scientific Sessions and Exhibition. ✧ Admission to Congress Social Programs (Welcome Reception / Opening Ceremony) ✧ Congress Kit (Congress Bag, Badge, USB with E-Program Included) ✧ Congress Lunch on July 09, 2016. ✧ Refreshment during the Congress Period
EXHIBITOR	<ul style="list-style-type: none"> ✧ Access to Exhibitions. ✧ Refreshment during the Congress Period. ✧ Congress Kit (Congress Bag, Badge, USB with E-Program Included)/per Exhibitor
STAFF	<ul style="list-style-type: none"> ✧ Please Reach the Staff if Any Assistance Needed.

* Security personnel will allow only persons with badges (and coupons for couponed functions) to enter the meeting rooms and the exhibition area.

* Badges are not transferable and cannot be lent to anyone for any purpose during the congress.

Congress Information

Venues

19th Retina International World Congress Scientific Sessions will be held at Taipei

International Convention Center (TICC).

Taipei International Convention Center (TICC)

No. 1, XinYi Rd., Sec. 5, Taipei, Taiwan

Tel: +886-2-2725-5200

Date

Wednesday, July 06 – Sunday, July 10, 2016

Secretariat Room

Place

Room 202, 2F, Taipei International Convention Center (TICC)

Services Hours

08:00-17:30 Wednesday, July 06~ Saturday, July 09, 2016

08:00-12:00 Sunday, July 10, 2016

Preview Room

The Preview Room is the location for speakers to upload and review scientific session presentations. Staffs are available to provide assistance and answer question. Speakers are reminded to have presentation uploaded at least 30 minutes prior to the presentation time.

Place

Room 202, 2F, Taipei International Convention Center (TICC)

Services Hours

08:00-17:30 Friday, July 08~ Saturday, July 09, 2016

08:00-12:00 Sunday, July 10, 2016

Official Language

The official language of 19th Retina International World Congress is English. Simultaneous translation will be available in some selected Scientific Sessions, please see the Daily Program

for more information.

Information / Tour Desk

Information and Tour Desk will be in service at the registration area during the registration hours and provide the relevant information on the congress and Taipei.

Lost and Found

The Lost and Found is located in the Information/Tour desk at the registration area.

Internet Access

Free WI-FI is available throughout the congress period in congress venue, TICC.

No Smoking Policy

TICC is a NON-SMOKING premise; therefore, smoking is absolutely prohibited at all times in the meeting rooms, exhibition area, and restrooms. Smoking is permitted in designated area outside the TICC. Your compliance is appreciated.

Exhibition

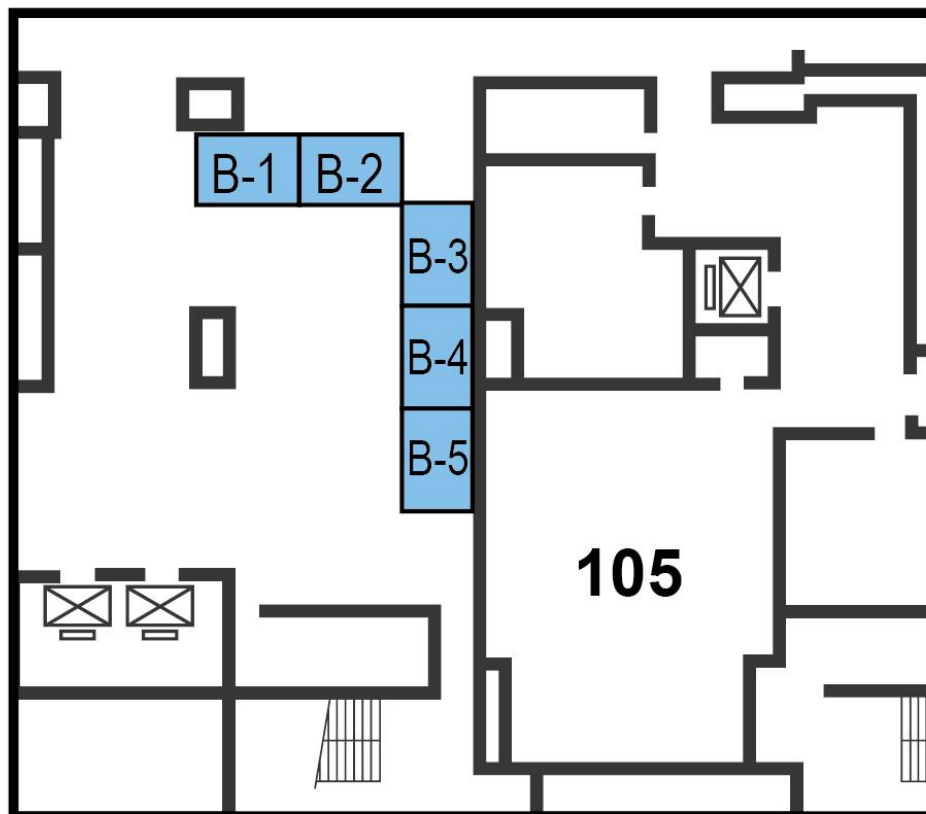
The exhibition is located at South Foyer on 1st floor of the Taipei International Convention Center (TICC). All participants are welcomed to visit during the exhibition hours.

Exhibition Hours

09:00-17:00 Saturday, July 09, 2016

09:00-11:00 Sunday, July 10, 2016

Exhibition Layout



Exhibitors

Booth No.	Company
B1	Retina Implant
B2	Okuvision
B3	Retina Hong Kong
B4	Bayer Taiwan
B5	Second Sight Medical

Social Program

All registered participants are cordially invited to the following programs.

Welcome Reception

Date: Wednesday, July 06, 2016
Time: 18:00 - 20:00
Venue: 3F, North Lounge, TICC
No. 1, XinYi Rd., Sec. 5, Taipei, Taiwan

Opening Ceremony

Date: Saturday, July 09, 2016
Time: 09:00 ~ 09:30
Venue: 2F, Room 201, TICC
No. 1, XinYi Rd., Sec. 5, Taipei, Taiwan

Congress Tour (Only for non-Taiwanese participants)

Date: Sunday, July 10, 2016
Time: 13:00 ~ 17:30
Stops: National Taiwan Museum, National Chiang Kai-shek Memorial Hall
Gathering Time: 12:45-13:00
Gathering Location: 1F, Lobby, TICC
Note: Congress tour will be provided on a first-come, first-served basis up to maximum of 160 participants.

All the Social Program below required the invitation for the admission.

Speaker Dinner

Date: Friday, July 08, 2016
Time: 18:30 ~ 20:30
Gathering Time: 17:45-18:00
Gathering Location: 1F, Lobby, TICC
Venue: TOKIYA, Taipei Guangfu S. Branch
B1, No.286, Guangfu S. Rd., Daan Dist., Taipei City, Taiwan

Gala Dinner

Date: Saturday, July 09, 2016
Time: 18:30 ~ 21:00
Venue: 3F, Banquet Hall, TICC
No. 1, XinYi Rd., Sec. 5, Taipei, Taiwan

Venue Map

Congress Venue Map:

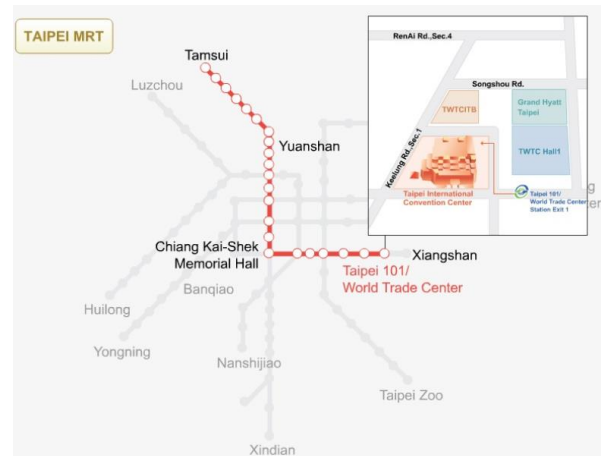


Public Transportation

By Bus



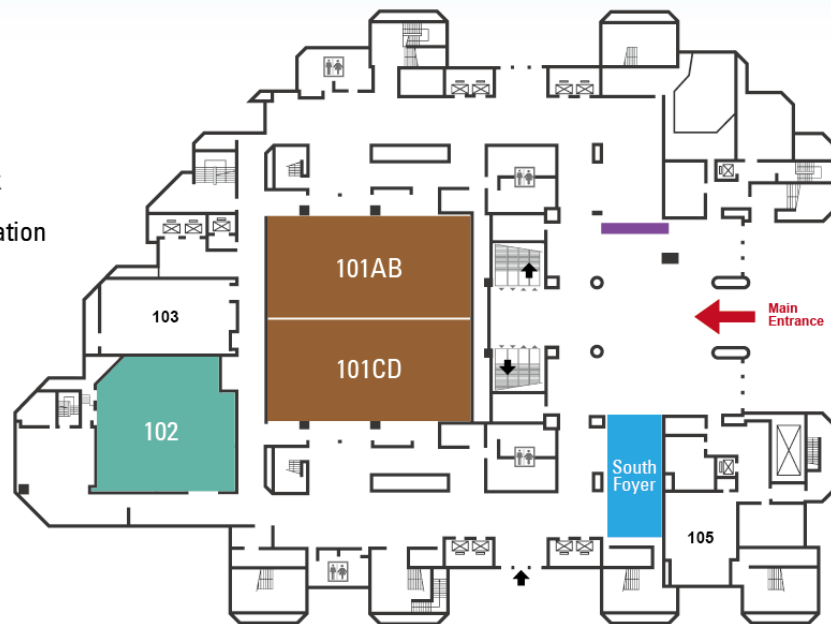
By MRT



Floor Plan

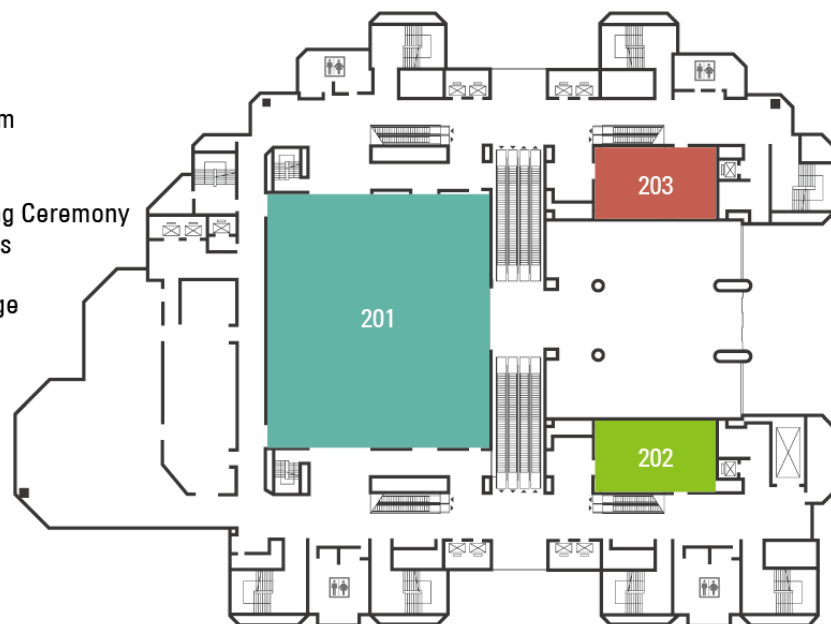
1F

- Exhibition
- Registration Desk
- Continuous Education Program Session
- Parallel Sessions



2F

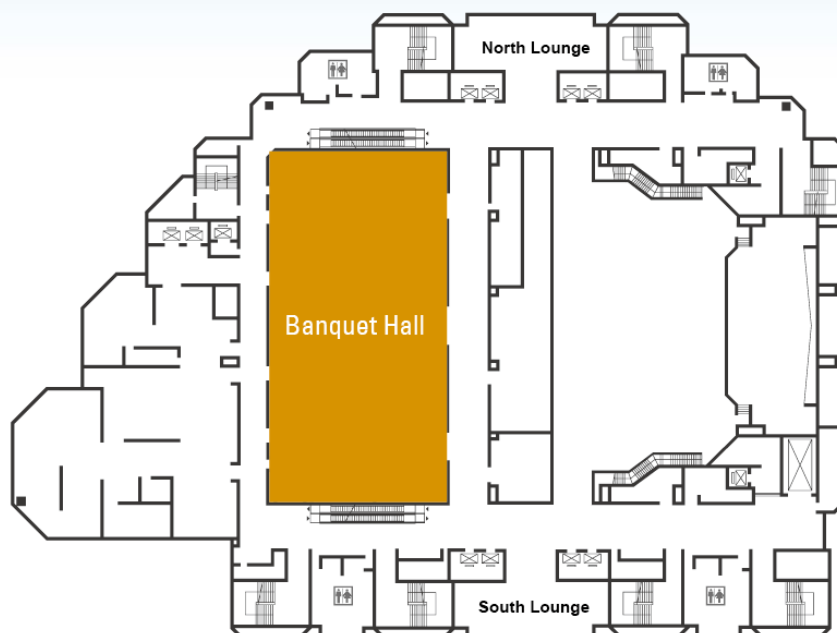
- • Secretariat Room
- • Preview Room
- • Opening / Closing Ceremony
- • Plenary Sessions
- Volunteers' Lounge (Volunteers Only)





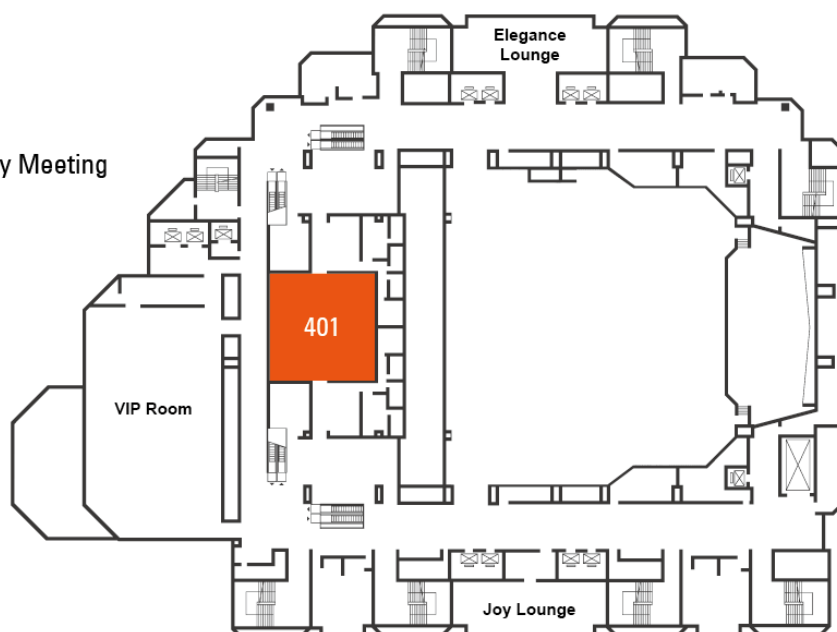
3F

- Lunch
- Gala Dinner



4F

- General Assembly Meeting



Information on Taiwan

Climate

July is the summer season in Taiwan with average temperature around 30~35°C.

Electricity and Water

Electric supply is 110 volts AC, 60 cycles. Drinking water served at hotels and restaurants is distilled or boiled. Tap water is suggested to be boiled before drinking.

Time Zone

Taiwan is 8 hours ahead of Greenwich Mean Time (GMT).

Currency and Banks

The Country's currency is the New Taiwan dollar (NT\$). The exchange rate in recent months is around NT\$30~33 for US\$1. Foreign currencies can be exchanged at hotels, airports and government-designated banks. Major credit cards are widely accepted, and traveler's checks may be accepted by tourist-oriented shops and at most international tourist hotels and banks. Banks open whole day from 09:00 to 15:30, Mon-Fri and closed at weekend and public holidays.

Languages

Mandarin Chinese is the official language in Taiwan, though other dialects are also spoken. Many people can speak some English for communication, however, most taxi drivers do not.

Useful Numbers

Taiwan Taoyuan International Airport	Tel: +886-3-398-2050
Tourism Bureau	Tel: +886-2-2717-3737
Foreign Affairs Division	Tel: +886-2-2348-2999

Travel in Taiwan

Airport Express Bus

Airport express bus between the Taoyuan International Airport and the Grand Hyatt Taipei (nearest hotel by the congress venue) is available through Air Bus East Line, and the cost is NT\$145 for one way ticket.

Taxi

Taxi in Taipei charges are NT\$70 for the first 1.25 km and NT\$5 for each additional 250 meters. An additional NT\$5 is charged for every two minutes of waiting, and a 20% surcharge is added to fares between 11 p.m. and 6 a.m. Airport Taxis charge according to the meter plus a 15% surcharge (highway tolls not included). Typical fare to Taipei is around NT\$1,200. Most drivers do not speak English, so it is a good idea to have hotel personnel write both your destination and your hotel's name and address in Chinese, along with the projected cost of each one-way trip.

MRT

Travel to the conference venue by Mass Rapid Transit (MRT) is available through the Metro Taipei Banqiao Nangang Line (Blue Line). The nearest station is the Taipei City Hall Station (Exit No.2). Single journey ticket ranges from NT\$20 to NT\$65 depending on traveling distance. MRT operating hours are 06:00~24:00. For further information on Metro Taipei and schedule, please visit the Metro Taipei website. <http://www.trtc.com.tw>

City Bus

A single section fare for city bus is NT\$15. Pay upon boarding or departure according to the instructions. For further information on bus route and schedule, please visit the Taipei e-bus System website. <http://www.e-bus.taipei.gov.tw/>

Taiwan High Speed Rail

The most convenient way to travel from Taipei City to Kaohsiung City is by the Taiwan High Speed Rail (THSR). An express train that is capable of running up to 300 km/h in 90 minutes. For further information on THSR route and schedule, please visit Taiwan High Speed Rail website. <http://www.thsrc.com.tw>

Scientific Programs**The 19th Retina International World Congress (RIWC 2016)****July 06, 2016 (Wed.)****08:00-17:30****MC Meeting****South Lounge, 3F****July 07, 2016 (Thu.)****09:00-17:30****General Assembly Meeting****401, 4F**

The 19th Retina International World Congress (RIWC 2016)

July 08, 2016 (Fri.)		
08:30-08:45	Opening Remarks	102, 1F
08:30-08:45	Opening Remarks Christina FASSER, Retina International (<i>Switzerland</i>) Nick LIN, Retinitis Pigmentosa Taiwan (<i>Taiwan</i>) Kin Ping TSANG, Retina Hong Kong (<i>Hong Kong S.A.R.</i>)	
08:45-12:30	Communication and Advocacy	102, 1F
08:45-09:15	Preparing Our Patients for Inclusion in Clinical Trials Claudette MEDEFINDT, Retina South Africa (<i>South Africa</i>)	
09:15-09:45	Patient Experts in Medicines Research and Development Caitriona DUNNE, Fighting Blindness (<i>Ireland</i>)	
09:45-10:15	FUNDALURP, Starting to Fly Gustavo SERRANO, Fundalurp (<i>Chile</i>)	
10:15-10:45	Linking Patient Group Engagement with Research Funding Tina HOULIHAN, RP Fighting Blindness (<i>UK</i>)	
10:45-11:15	Coffee Break	
11:15-11:45	How To Spread Information About How To Live with RP Caisa RAMSHAGE, Svenska RP-Föreningen (<i>Sweden</i>)	
11:45-12:30	RI Website - Your and Our Expectations for the Future Avril DALY, Retina International (<i>Ireland</i>)	
12:30-13:30	Lunch Break	VIP Room, 4F
13:30-17:30	Research and Drug Development	102, 1F
13:30-14:30	Overview on Ongoing and Future Clinical Trials in RDD Patricia ZILLIOX, Foundation Fighting Blindness Clinical Research Institute (<i>USA</i>)	
14:30-15:00	Clinical Trials in Gene Therapy and Market Access - The Industry Perspective Rogerio VIVALDI, Spark Therapeutics Inc. (<i>USA</i>)	
15:00-15:30	Coffee Break	
15:30-16:00	RP Family's Engagement in Therapy Research and Development - Asian Model Richard Yang, Reflection Biotechnologies (<i>Hong Kong S.A.R.</i>)	
16:00-16:30	PRO Patient Reported Outcomes - An Important Concept Christina FASSER, Retina International (<i>Switzerland</i>)	



16:30-17:00 **HTA and Other Challenges for Patients, Their Families and Patient Organizations**

Avril DALY, Retina International (*Ireland*)

17:00-17:30 **Discussion and Concluding Remarks**

Christina FASSER, Retina International (*Switzerland*)

The 19th Retina International World Congress (RIWC 2016)

July 09, 2016 (Sat.)		
09:00-09:30	Opening Remarks <i>(WITH Simultaneous Interpretation)</i>	201, 2F
Moderator: Avril DALY		
09:00-09:10	Opening Remarks Christina FASSER, Retina International <i>(Switzerland)</i>	
09:10-09:20	Welcome Remarks Nick LIN, Retinitis Pigmentosa Taiwan <i>(Taiwan)</i> Kin Ping TSANG, Retina Hong Kong <i>(Hong Kong S.A.R.)</i>	
09:20-09:30	Congratulatory Remarks Chien-Jen CHEN, Vice President of the Republic of China <i>(Taiwan)</i>	
09:30-10:30	Plenary 1 <i>(WITH Simultaneous Interpretation)</i>	201, 2F
Moderator: Avril DALY		
09:30-10:00	Retinal Degenerations - A Clinical Overview	
PL101	Elise HEON, The Hospital for Sick Children <i>(Canada)</i>	
10:00-10:30	Gene Therapy: From Experimental to Clinical	
PL102	Francesco TESTA, Second University of Naples <i>(Italy)</i>	
10:30-11:00	Coffee Break	
11:00-12:30	Plenary 2 <i>(WITH Simultaneous Interpretation)</i>	201, 2F
Moderator: Gerald CHADER		
11:00-11:30	Unoprostone Clinical Trial Update	
PL201	Shuichi YAMAMOTO, Chiba University Hospital <i>(Japan)</i>	
11:30-12:00	Stem Cell and Restoration of Eye Sight	
PL202	Morten C. MOE, Department of Ophthalmology, Oslo University Hospital and University of Oslo, Norway <i>(Norway)</i>	
12:00-12:30	Retina Implants: From Laboratories to Clinical Application	
PL203	Eberhart ZRENNER, University of Tübingen <i>(Germany)</i>	
12:30-14:00	Lunch Break	
14:00-15:30	Updates on Argus II <i>(WITH Simultaneous Interpretation)</i>	101AB, 1F
Moderator: Gerald CHADER		
14:00-14:30	Scientific Rationale of Argus II	

PA1101 Gerald CHADER, University of Southern California *(USA)*

14:30-15:00 **Implant of Argus II**

PA1102 Gregg T. KOKAME, University of Hawaii School of Medicine *(USA)*

15:00-15:30 **My Witness: Living with Argus II**

PA1103 Frances FULTON *(USA)*

14:00-15:30 Retina Conservation and Regeneration 101C, 1F
(WITH Simultaneous Interpretation)

Moderator: Elise HEON

14:00-14:30 **Clinical Trial of 49 Channel STS Retinal Prosthesis for Advanced RP Patient**

PA1201 Takashi FUJIKADO, Osaka University Graduate School of Medicine *(Japan)*

14:30-15:00 **Lutein, Zeaxanthin, and Meso-Zeaxanthin: The Basic and Clinical Science Underlying Carotenoid-based Nutritional Interventions Against Ocular Disease**

PA1202 Paul S. BERNSTEIN, Moran Eye Center, University of Utah *(USA)*

15:00-15:30 **Retinal Regeneration**

PA1203 Michiko MANDAI, Riken, Center for Developmental Biology *(Japan)*

14:00-15:30 Educational Session on Clinical and Genetics of Retinal Degenerations 101D, 1F

Moderator: Shuichi YAMAMOTO

14:00-14:30 **Clinical Features of Retinal Degenerations**

PA1301 Stephen LAM, The Chinese University of Hong Kong *(Hong Kong S.A.R.)*

14:30-15:00 **RP Families Engagement in Therapy Research and Development -- Asian Model**

PA1302 Richard YANG, Reflection Biotechnologies *(Hong Kong S.A.R.)*

15:00-15:30 **Japanese Consortium for Hereditary Retinal Diseases**

PA1303 Takeshi IWATA, National Institute of Sensory Organs, National Hospital Organization Tokyo Medical Center *(Japan)*

14:00-15:30 AMD and Stargardt Disease 103, 1F

Moderator: Juliana M. Ferraz SALUM

14:00-14:20 **AMD Prevalence and Interventions in Taiwan**

PA1401 Chang-Hao YANG, National Taiwan University Hospital *(Taiwan)*

14:20-14:50 **Comparison of Anti VEGF Treatments on AMD**

PA1402 Shih-Jen CHEN, Taipei Veterans General Hospital *(Taiwan)*

14:50-15:10 **ProgSTAR: An International Natural History Study for People with Stargardt Disease**

Patricia ZILLIOX, Foundation Fighting Blindness Clinical Research Institute *(USA)*

15:10-15:30 **Stem Cell Therapy in Geographic Atrophy and Stargardt**

PA1404 Juliana M. Ferraz SALUM, UNIFESP Federal University of São Paulo *(Brazil)*

15:30-16:00 Coffee Break



16:00-17:30	Updates on RETINA IMPLANT ALPHA <i>(WITH Simultaneous Interpretation)</i>	101AB, 1F
	Moderator: Caroline CHEE	
16:00-16:30	Scientific Rationale of RETINA IMPLANT ALPHA	
PA2101	Eberhart ZRENNER, University of Tübingen <i>(Germany)</i>	
16:30-17:00	Implantation of RETINA IMPLANT ALPHA	
PA2102	Helmut G. SACHS, Eye Clinic, Klinikum Dresden-Friedrichstadt, University teaching hospital of the technical university Dresden. <i>(Germany)</i>	
17:00-17:30	My Witness: Living with RETINAL IMPLANT ALPHA	
PA2103	Peter BÖHM, ARA-Tec GmbH <i>(Germany)</i>	
16:00-17:30	Updates on Gene Therapy <i>(WITH Simultaneous Interpretation)</i>	101C, 1F
	Moderator: Takeshi IWATA	
16:00-16:30	Developing Patient Relevant Outcomes in Gene Therapy Trials	
PA2201	Daniel C. CHUNG, Spark Therapeutics Inc. <i>(USA)</i>	
16:30-16:50	Gene Therapy for Retinitis Pigmentosa	
PA2202	Tomita HIROSHI, Iwate University/ Graduate Course in Biological Sciences <i>(Japan)</i>	
16:50-17:10	RD Cure: CNGA3-Achromatopsia Trial	
PA2203	Dominik FISCHER (Presented by Eberhart ZRENNER), Centre for Ophthalmology, University of Tübingen <i>(Germany)</i>	
17:10-17:30	Visual Restoration by Optogenetic Therapy	
PA2204	Serge PICAUD, Institut de la vision <i>(France)</i>	
16:00-17:30	Advocacy on Accessibility	101D, 1F
	Moderator: Ming LIU	
16:00-16:30	Window's Light -- A Screen Reading Software for All Languages	
PA2301	See-Hung HA, Retina Hong Kong <i>(Hong Kong S.A.R.)</i>	
16:30-17:00	Internet+ and Life Changes in Mainland China	
PA2302	Ying LIN, Library of Guangzhou University <i>(P.R. China)</i>	
17:00-17:30	My Life with A Guide Dog	
PA2303	Kentarou DOI, Medtronic Japan Co., Ltd. <i>(Japan)</i>	
16:00-17:30	Progress on Gene Mutations Sequencing in Great China Region	103, 1F
	Moderator: San-Ni CHEN	
16:00-16:30	The RP Registry in Hong Kong	
PA2401	Stephen LAM, The Chinese University of Hong Kong <i>(Hong Kong S.A.R.)</i>	
16:30-17:00	Genetic Screening for RP Patients in Taiwan	
PA2402	Keng-Hung LIN, Taichung Veterans General Hospital <i>(Taiwan)</i>	
17:00-17:30	Screening for RP Genes in Mainland China	
PA2403	Zibin JIN, The Eye Hospital of Wenzhou Medical University <i>(P.R. China)</i>	
18:30-21:00	Gala Dinner	Banquet Hall, 3F



July 10, 2016 (Sun.)		
09:00-10:30	Transcorneal Electrical Stimulation <i>(WITH Simultaneous Interpretation)</i>	101AB, 1F
Moderator: Walter WROBEL		
09:00-09:30	Scientific Rationale of Transcorneal Electrical Stimulation	
PA3101	Eberhart ZRENNER, University of Tübingen <i>(Germany)</i>	
09:30-10:00	Transcorneal Electrical Stimulation Therapy for RP Patients Using OkuStim®	
PA3102	Guido BLAESS, Okuvision GmbH <i>(Germany)</i>	
10:00-10:30	Results of Clinical Trial	
PA3103	Eberhart ZRENNER, University of Tuebingen <i>(Germany)</i>	
09:00-10:30	Updates on Treatments for Age-Related Macular Degeneration	101C, 1F
Moderator: Yih-Shiou HUANG		
09:00-09:30	iPSCell-Derived RPE Transplantation for Age-Related Macular Degeneration	
PA3201	Shih-Hwa CHIOU, Taipei Veterans General Hospital <i>(Taiwan)</i>	
09:30-10:00	Advances in Wet AMD	
PA3202	Juliana M. Ferraz SALUM, UNIFESP Federal University of São Paulo <i>(Brazil)</i>	
10:00-10:30	Prospective Therapies for Dry AMD	
PA3203	Katarina CREESE, Centre for Eye Research Australia; The Royal Victorian eye and Ear Hospital <i>(Australia)</i>	
09:00-10:30	Mental Health and Mutual Support Among Patients and Cares <i>(The whole session will be presented in Chinese)</i>	101D, 1F
Moderator: Ying LIN		
09:00-09:30	From Depression to Progression	
PA3301	Wen-Fu CHEN, Agricultural Research Institute, Council of Agriculture, Executive Yuan <i>(Taiwan)</i>	
09:30-10:00	RP Doesn't Mean Loss of All	
PA3302	Suet Ming TAM, Retina Hong Kong <i>(Hong Kong S.A.R.)</i>	
10:00-10:30	Mental Health of RP Patients and Social Support	
PA3303	Ming LIU, East China Normal University <i>(P.R. China)</i>	
10:30-11:00	Coffee Break	
11:00-11:30	Plenary 3 <i>(WITH Simultaneous Interpretation)</i>	201, 2F
Moderator: Avril DALY		
11:00-11:30	Foresight: From Laboratories to Clinics	
PL301	Gerald CHADER, University of Southern California <i>(USA)</i>	



11:30-12:00	Closing Ceremony <i>(WITH Simultaneous Interpretation)</i>	201, 2F
Moderator: Avril DALY		
11:30-11:40	Closing Remarks Christina FASSER, Retina International <i>(Switzerland)</i>	
11:40-11:50	Thanking Remarks Kin Ping TSANG, Retina Hong Kong <i>(Hong Kong S.A.R.)</i> Nick LIN, Retinitis Pigmentosa Taiwan <i>(Taiwan)</i>	
11:50-12:00	Takeover Remarks Frazer ALEXANDER, Retina New Zealand Inc <i>(New Zealand)</i>	



EYLEA® 采視明®

已核准 **3** 項適應症

健保給付103年8月1日正式生效



適用於治療血管新生型 (溼性) 年齡相關性黃斑部退化病變。



中央視網膜靜脈阻塞(CRVO)續發黃斑部水腫所導致的視力損害。



糖尿病黃斑部水腫(DME)所導致的視力損害。

Eylea適應症

- 適用於治療血管新生型 (溼性) 年齡相關性黃斑部退化病變。
- 中央視網膜靜脈阻塞(CRVO)續發黃斑部水腫所導致的視力損害。
- 糖尿病黃斑部水腫(DME)所導致的視力損害

劑量與投藥方式

Eylea的建議劑量為2 mg aflibercept (相當於50微升)。

血管新生型(溼性)年齡相關性黃斑部退化病變(wAMD)

- Eylea開始治療時為前三個月每個月注射1次，連續注射3次，之後則為每2個月注射1次。患者於治療一年後，若病情需要，建議注射方式為每4~12週接受1次治療。

中央視網膜靜脈阻塞(CRVO)續發黃斑部水腫

- 每個月注射1次；樞紐試驗中，前6個月為每個月注射，大部分的進步出現在前3個月。治療必須持續並依據視力和/或解剖學結果延長治療間隔，但目前沒有足夠

的證據決定應延長多久的治療間隔。正常情況下，應於注射探訪時做監測。治療間隔延長至完成治療期間，臨床治療醫師應依據病患個別的反應來決定監測時程。

糖尿病黃斑部水腫(DME)所導致的視力損害

- Eylea治療開始時為每個月注射1劑，連續注射5劑，之後則為每2個月注射1劑。若視力與解剖結果顯示病患未因持續治療而受益，應停用Eylea。

禁忌

禁用於對活性物質aflibercept或本產品任何賦形劑過敏的病患。
活動性或疑似眼部或眼周感染。活動性重度眼內發炎。

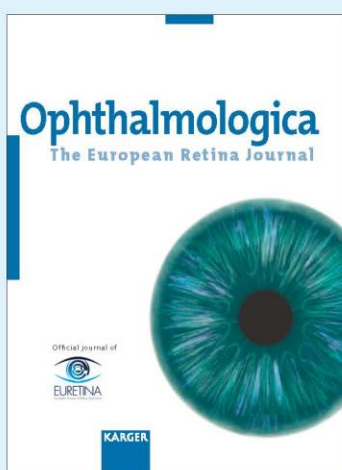
警語與注意事項

玻璃體內注射相關反應(眼內壓升高)、致免疫原性及全身性反應(包括非眼球出血及動脈血栓栓塞事件)。

最常見的不良反應(至少5%的EYLEA治療病患)為結膜出血(25.0%)、眼睛疼痛(10.2%)、白內障(7.6%)、眼內壓升高(7.5%)、玻璃體剝離(7.4%)與玻璃體漂浮物(6.9%)。

Karger Publications in Ophthalmology

Patient-oriented research in ophthalmology with special focus on management of retina and vitreous diseases



Editor
S. Wolf, Bern

Associate Editors

J. Bainbridge, London
G. Coscas, Créteil
H. Heimann, Liverpool
J.-F. Korobelnik, Bordeaux
M. La Cour, Copenhagen
A. Loewenstein, Tel Aviv
Y. Ogura, Nagoya
R. Tadayoni, Paris
C. van Meurs, Rotterdam
M. Zinkernagel, Bern

www.karger.com/oph

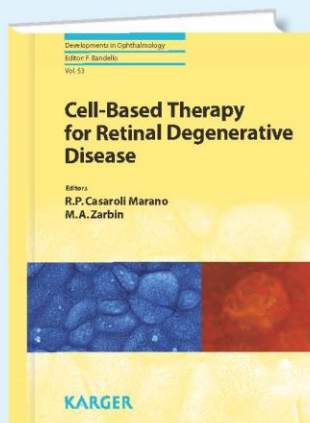


**For easy ordering
please go to our website**

Further related publications on
www.karger.com/ophthalmology



A unique source of the most currently available data presented by leading international experts



This book serves as an excellent introduction to a field that is now entering early-stage clinical trials and promises to operate at the leading edge of regenerative medicine. Retina specialists, general ophthalmologists as well as researchers will find here a wealth of information on the translational aspects of cell-based therapies. Further, business executives and students interested in understanding the potential applications of stem cell therapy to retinal degenerative disease and glaucoma will also find this book informative reading.

Developments in Ophthalmology, Vol. 53

Cell-Based Therapy for Retinal Degenerative Disease

Editors: Casaroli-Marano, R.P. (Barcelona); Zarbin, M.A. (Newark, N.J.)

XII + 206 p., 55 fig., 41 in color, 6 tab., 2014

List price:

CHF 198.00 / EUR 185.00 / USD 233.00 (hard cover)

Special Offer:

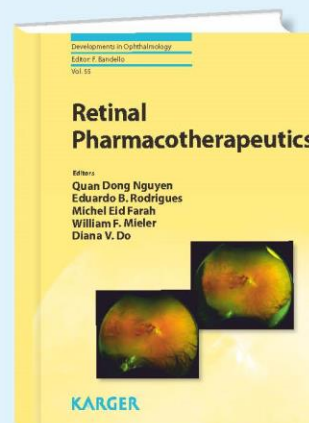
CHF 129.00 / EUR 120.00 / USD 151.00

ISBN 978-3-318-02584-2

www.karger.com/Book/Home/261409



From basic research to therapy



This publication discusses many aspects from basic research on the retina, to animal models for retinal drug delivery, retinal diseases that are amenable to pharmacotherapy and also drugs and mechanisms in retinal diseases. Anyone concerned with the management of retinal diseases – the general ophthalmologist and the retina specialist alike – will find this book indispensable reading.

Developments in Ophthalmology, Vol. 55

Retinal Pharmacotherapeutics

Editors: Nguyen, Q.D. (Omaha, Nebr.); Rodrigues, E.B. (São Paulo); Farah, M.E. (São Paulo); Mieler, W.F. (Chicago, Ill.); Do, D.V. (Omaha, Nebr.)

XVI + 408 p., 83 fig., 71 in color, 33 tab., 2016

List price:

CHF 317.00 / EUR 296.00 / USD 373.00 (hard cover)

Special Offer:

CHF 136.00 / EUR 127.00 / USD 160.00

ISBN 978-3-318-05564-1

www.karger.com/Book/Home/266819



KARGER



諾華製藥 許諾台灣

以專業支持醫療照護及生技發展，用愛心關懷弱勢團體及文化延續

諾華製藥集團在醫療保健領域累積超過二百年歷史，是全球醫療保健的領導企業，而且是唯一在專利藥及學名藥上均居領導地位的公司，以提供創新處方用藥、優質合理價格的學名藥及全方位視力保健用藥為核心任務。

諾華的中文名稱是取其「許諾中華，開發嶄新生命科技」的意義，亦反映出諾華致力於研究與發展創新產品。自1996台灣分公司創立以來，諾華除了實踐醫療照護任務外，也長期協助台灣生物科技發展，並推展多項人才培育計畫和社會關懷活動。這份耕耘台灣的努力也深獲本地認可，諾華於2012及2015年兩度與經濟部簽訂合作意向書，承諾持續投資台灣支持本土生技發展；也於2007及2015年兩度榮獲天下雜誌企業公民獎項，名列外商企業公民前十名，亦為製藥公司的表率。如欲進一步了解諾華詳細資料，請瀏覽台灣諾華網站 www.novartis.com.tw。



諾華製藥 許諾台灣

以專業支持醫療照護及生技發展，用愛心關懷弱勢團體及文化延續

諾華製藥集團在醫療保健領域累積超過二百年歷史，是全球醫療保健的領導企業，而且是唯一在專利藥及學名藥上均居領導地位的公司，以提供創新處方用藥、優質合理價格的學名藥及全方位視力保健用藥為核心任務。

諾華的中文名稱是取其「許諾中華，開發嶄新生命科技」的意義，亦反映出諾華致力於研究與發展創新產品。自1996台灣分公司創立以來，諾華除了實踐醫療照護任務外，也長期協助台灣生物科技發展，並推展多項人才培育計畫和社會關懷活動。這份耕耘台灣的努力也深獲本地認可，諾華於2012及2015年兩度與經濟部簽訂合作意向書，承諾持續投資台灣支持本土生技發展；也於2007及2015年兩度榮獲天下雜誌企業公民獎項，名列外商企業公民前十名，亦為製藥公司的表率。如欲進一步了解諾華詳細資料，請瀏覽台灣諾華網站 www.novartis.com.tw。

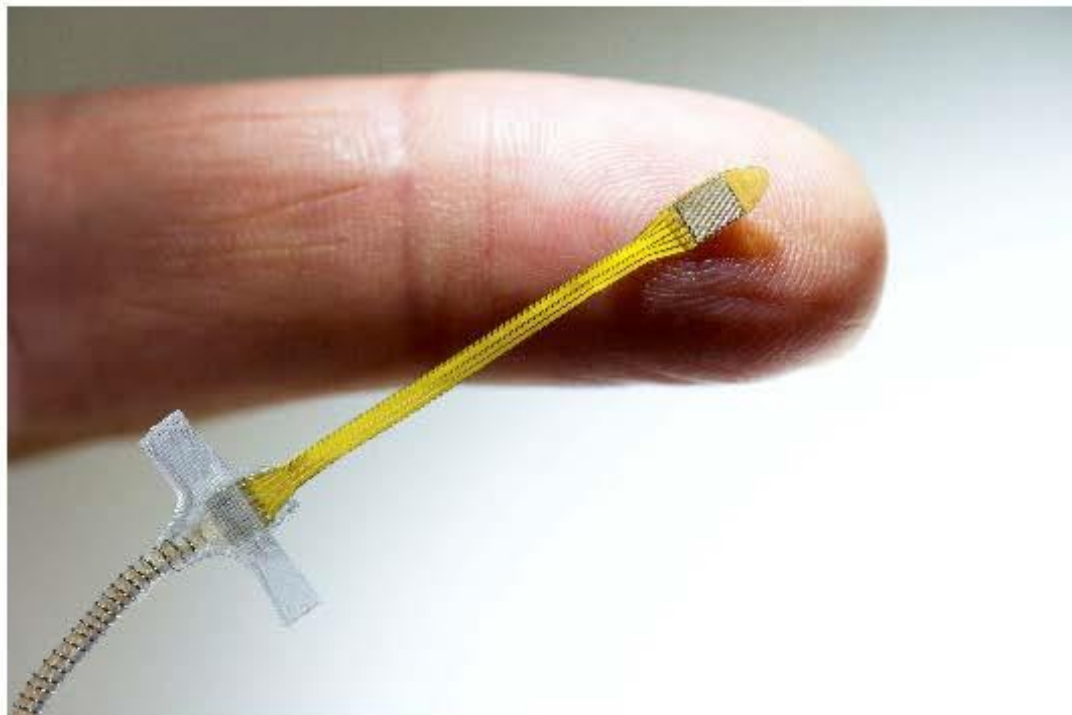
ABOUT RETINA IMPLANT AG:

RETINA IMPLANT AG IS THE LEADING DEVELOPER OF SUBRETINAL IMPLANTS FOR PATIENTS BLIND DUE TO RETINITIS PIGMENTOSA. THE COMPANY IS FUNDED BY PRIVATE INVESTORS WITH THE GOAL OF DEVELOPING A FULLY FUNCTIONING ELECTRONIC SUBRETINAL IMPLANT TO RESTORE USEFUL VISION TO THE BLIND. IN 2005, RETINA IMPLANT BEGAN IMPLANTING ITS DEVICE IN HUMAN PATIENTS, AND STARTED A SECOND CLINICAL TRIAL IN 2010. IN JULY 2013, THE RETINA IMPLANT ALPHA DEVICE WAS CE-APPROVED AND IS THE FIRST SUBRETINAL IMPLANT ON THE MARKET. IT IS NOW AVAILABLE AND REIMBURSED IN 7 CLINICS IN GERMANY, OTHER COUNTRIES WILL FOLLOW.

TO LEARN MORE, VISIT: [HTTP://WWW.RETINA-IMPLANT.DE/](http://www.retina-implant.de/)

CONTACT-DETAILS:**Retina Implant AG**

Gerhard-Kindler-Straße 8
72770 Reutlingen, Germany
Phone: +49 (0) 7121 36403-0
E-Mail: info@retina-implant.de





ABOUT OKUVISION:

Okuvision offers the "OkuStim[®]" system, which is one of the first outpatient treatments for retinitis pigmentosa (RP) whose safety and efficacy has been shown in clinical studies. The Okuvision therapy can verifiably slow down the progression of the disease and thereby preserve vision for longer by guiding weak electrical pulses to the retina. OkuStim[®] is a CE approved medical product and can only be used with a medical prescription. The system is set by the doctor to meet the individual characteristics of each patient. Patients can treat themselves at home or at eye-centers with regular eye exams at the hospital. To learn more please visit: www.okuvision.de

CONTACT DETAILS:

Okuvision GmbH

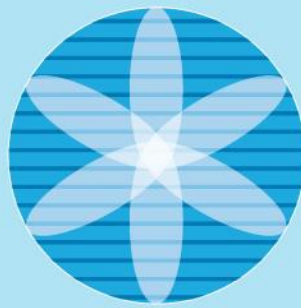
Gerhard-Kindler-Str. 6

72770 Reutlingen, Germany

Phone: +49 7121-36403-299

E-Mail: info@okuvision.de





RIWC / 2016
T A I P E I

2016 19th Retina International World Congress